



## Fixed Wireless Broadband Infrastructure Commercial and/or Residential Deployment

### Remote Node for DHCP

The Remote Node for DHCP (RND) consists of a NEMA enclosure equipped with 802.11b Wireless Infrastructure equipment capable of interconnecting up to 30 end-users for delivery of IP traffic or Internet connectivity. The system provides continuous connectivity to all end-user station. Security is available through 64 bit or 128 bit WEP. Additional security is provided by MAC address table authorization.

#### System Components

- High gain Omni directional antenna
- Low loss antenna cabling
- Lightning suppressor
- NEMA enclosure with external antenna cable connectors
- 802.11b Wireless System



### Remote Node for Dual DHCP

The Remote Node for Dual DHCP (RND2) provides all the features of the RND with the exception of Dual 180 degree antennas for higher density areas. The system can support up to 60 end-users with the same general specifications as the Omni RND

stem.

### Remote Node for Relay and DHCP

The Remote Node for Relay and DHCP (RNRD) provides the ability to relay bandwidth to locations where bandwidth is not available. At the same time, the system acts as a full-featured Remote Node for DHCP (RND). Additional components include a directional point-to-point antenna and a point-to-point enabled wireless unit. The repeat feature requires an unobstructed Line Of Sight (LOS) from one RNRD to another RNRD. The typical installation would consist of one RNRD installed at a location with bandwidth and a second RNRD installed at a no-bandwidth location. This configuration extends the footprint of the wireless system.



High speed wireless solutions



# Fixed Wireless Broadband Infrastructure Client Equipment

## Customer Premise Equipment CPE

The customer premise equipment is configured with 5 alternate solutions to accommodate various end user applications. These alternatives will operate as DHCP units. The network will restrict users by recording Mac addresses in the user list. Due to different types of installation optional antenna cables, amplifiers, or antennas are included as options.

### CPE Configurations / Options



Laptop

802.11b PCMCIA Silver Card supporting 64 bit encryption



Personal Computer

PCI Adapter w/ 802.11b Silver Card supporting 64 bit encryption



PC or Laptop

USB Adapter w/ 802.11b Silver Card supporting 64 bit encryption



PC or Laptop

Ethernet Adapter w/ 802.11b Silver Card supporting 64 bit encryption



SOHO network

RJ-45 Jack at demarcation point for multi-user network connectivity (supports routable IP)

### Optional residential equipment depending on installation:



8.5 dBi Patch antenna compatible with Lucent Silver card



Planar Array Directional Antenna 11, 13 or 16 dBi w/ adjustable mount

High Speed Wireless Solutions

## **Fixed Wireless Broadband Infrastructure Examples of Deployment & Coverage Area**

### **Blanket Area Coverage**

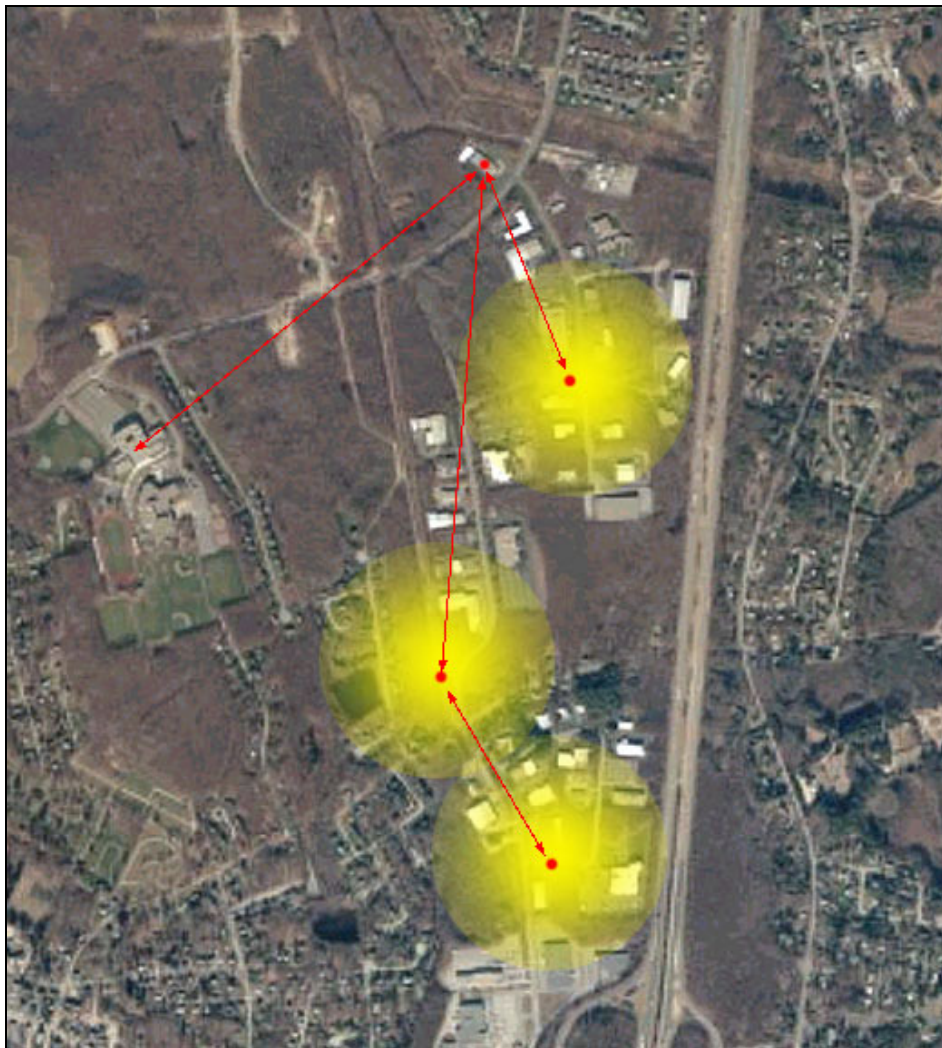


High speed wireless solutions

1410 Providence Hwy., Norwood, MA, 02062, p: 781.762.0200, f: 781.762.0225  
info@ascio-wireless.com www.ascio-wireless.com

## **Fixed Wireless Broadband Infrastructure Examples of Deployment & Coverage Area**

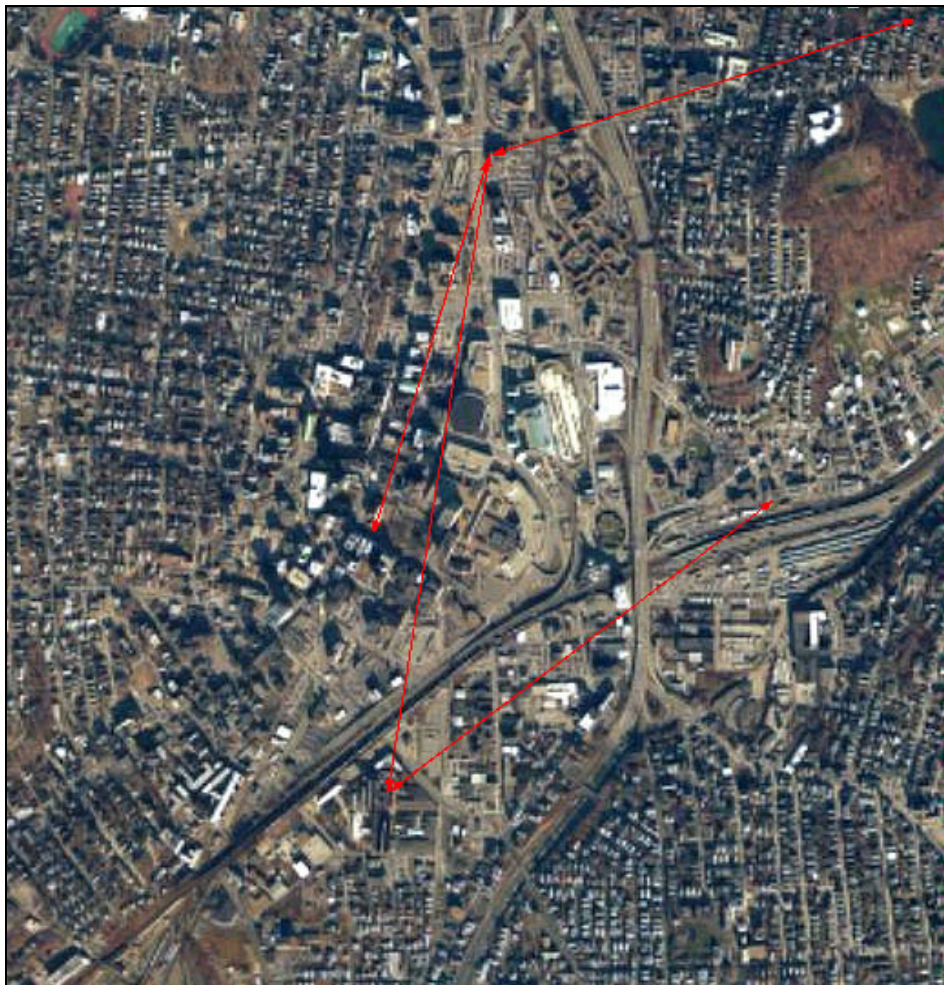
### **Point to Multi-Point w/ Repeaters and Blanket Area Coverage**



High Speed Wireless Solutions

## **Building Connectivity Through Fixed Wireless Example of Deployment & Logistical Area**

### **Point to Point and Point to Multi-Point**



High speed wireless solutions

## High Speed Wireless LAN Deployment & Coverage Area

### Wireless Campus



High speed wireless solutions

